



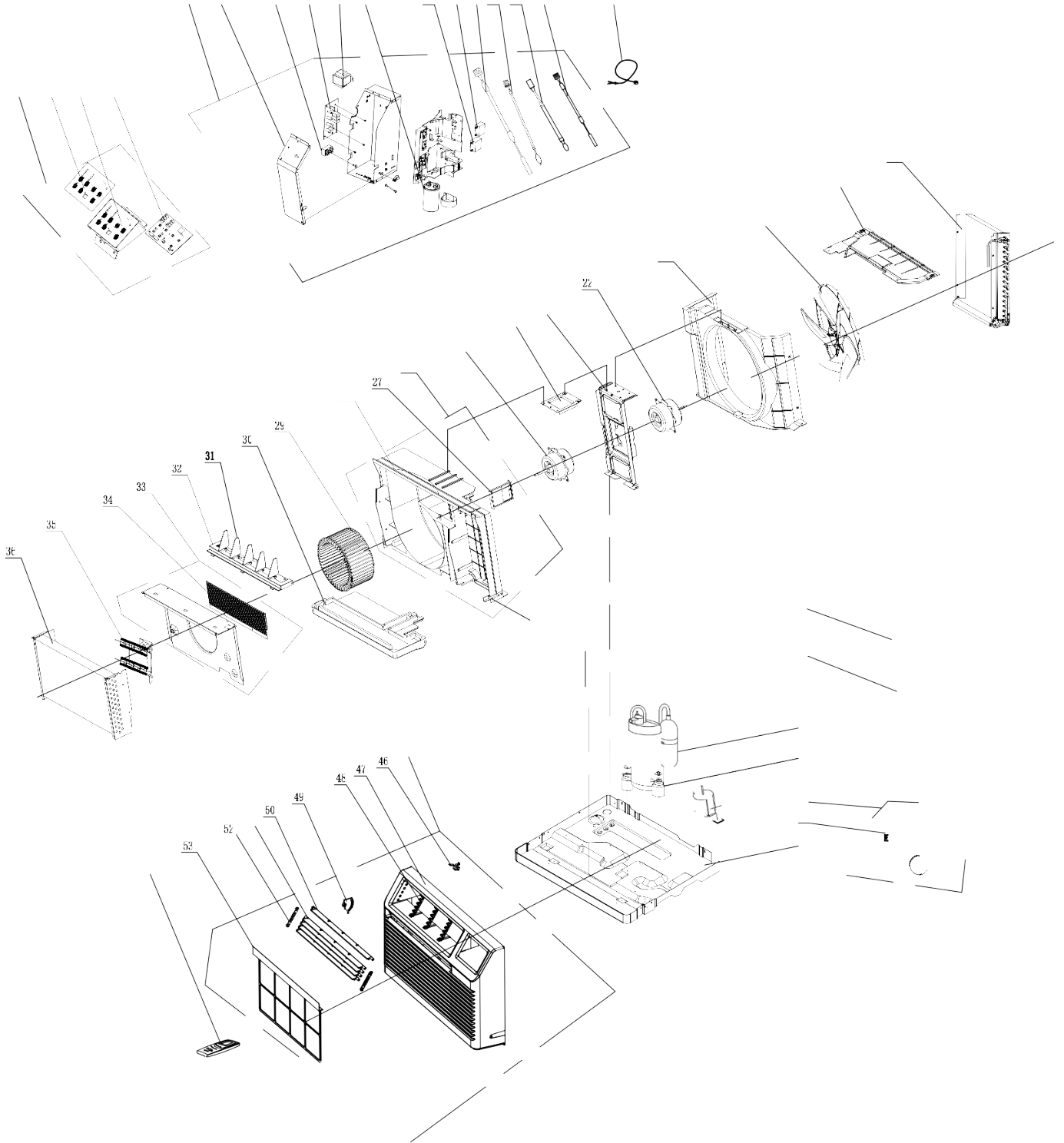
PARTS LIST

Room Air Conditioner

PTTH09B-1



EXPLODED VIEW



REPLACEMENT PARTS

| Location | Part Name | Quantity | Part No. |
|----------|----------------------------|----------|---------------------|
| 1 | LCD Cover Sub-assy | 1 | 209044060007_X30266 |
| 2 | Membrane | 1 | 63029901724 |
| 3 | LCD Cover | 1 | 2012103301 |
| 4 | Display Board | 1 | 300001060115 |
| 5 | Electric Box Assy | 1 | 100002061517_X30266 |
| 6 | Electric Box Cover | 1 | 01411405 |
| 7 | Terminal Board | 2 | 42011103 |
| 8 | Main Board | 1 | 300002000832 |
| 9 | Transformer | 1 | 450002000010 |
| 10 | Capacitor CBB65 | 1 | 33000081 |
| 11 | Capacitor CBB61 | 1 | 3301074710 |
| 12 | Capacitor CBB61S | 1 | 3301074701 |
| 13 | Temperature Sensor | 1 | 390000372 |
| 14 | Temperature Sensor | 1 | 390001978G |
| 15 | Temperature Sensor | 1 | 390000598 |
| 16 | Room Sensor | 1 | 39000191 |
| 17 | Pwer cord (LCDI) | 1 | 4002036353 |
| 18 | Condenser Assy | 1 | 01100200249 |
| 19 | Top Cover | 0 | none |
| 20 | Axial Flow Fan | 1 | 10331008 |
| 21 | Flow Guide Loop | 1 | 000218000003 |
| 22 | Fan Motor | 1 | 1501104710 |
| 23 | Motor Support | 0 | none |
| 24 | Connection Board | 0 | none |
| 25 | Fan Motor | 1 | 150110335 |
| 26 | Propeller housing Sub-Assy | 1 | 209027000003 |
| 27 | Baffle Plate | 1 | 26112905 |
| 28 | Propeller Housing | 1 | 22201020 |
| 29 | Centrifugal Fan | 1 | 10312903 |
| 30 | Water Tray | 0 | none |
| 31 | Air Louver | 5 | 10512907 |
| 32 | Swing Louver Clamp | 1 | 24211045 |
| 33 | Front Clapboard Assy | 1 | 01231100 |
| 34 | Rear Grill | 1 | 01451001 |
| 35 | Electric Heat Groupware | 1 | 32001011 |
| 36 | Evaporator Assy | 1 | 01100100159 |
| 37 | 4-Way Valve Assy | 1 | 030152000114 |
| 38 | Magnet Coil | 1 | 4300040022 |
| 39 | Compressor and Fittings | 1 | 00101439 |
| 40 | Compressor Gasket | 3 | 00901200014 |
| 41 | Drainage Valve | 1 | 07101001 |
| 42 | Capillary Sub-assy | 1 | 03000600243 |
| 43 | One way Valve | 1 | 07131147 |
| 44 | Chassis Sub-assy | 1 | 017000000327P |
| 45 | Front Panel Assy | 1 | 00800600001_X30266 |
| 46 | Click Spring | 1 | 73022901 |
| 47 | Front Panel | 1 | 27230010744 |
| 48 | Guide Louver Support | 3 | 2421290601 |
| 49 | Ratchet Wheel | 1 | 24232901 |
| 50 | Guide Louver 1 | 1 | 1051290801 |
| 51 | Guide Louver 2 | 4 | 1051290901 |
| 52 | Linkage of Guide Louver | 2 | 1058290403 |
| 53 | Filter Sub-Assy | 1 | 1112103002 |
| 54 | Remote Controller | 1 | 30510092_X30266 |

Due to ongoing product improvements, specifications and dimensions are subject to change and correction without notice or incurring obligations. Determining the application and suitability for use of any product is the responsibility of the installer. Additionally, the installer is responsible for verifying dimensional data on the actual product prior to beginning any installation preparations.

Incentive and rebate programs have precise requirements as to product performance and certification. All products meet applicable regulations in effect on date of manufacture; however, certifications are not necessarily granted for the life of a product. Therefore, it is the responsibility of the applicant to determine whether a specific model qualifies for these incentive/rebate programs.

Comfort-Aire[®]

1900 Wellworth Ave., Jackson, MI 49203 • Ph. 517-787-2100 • www.marsdelivers.com

